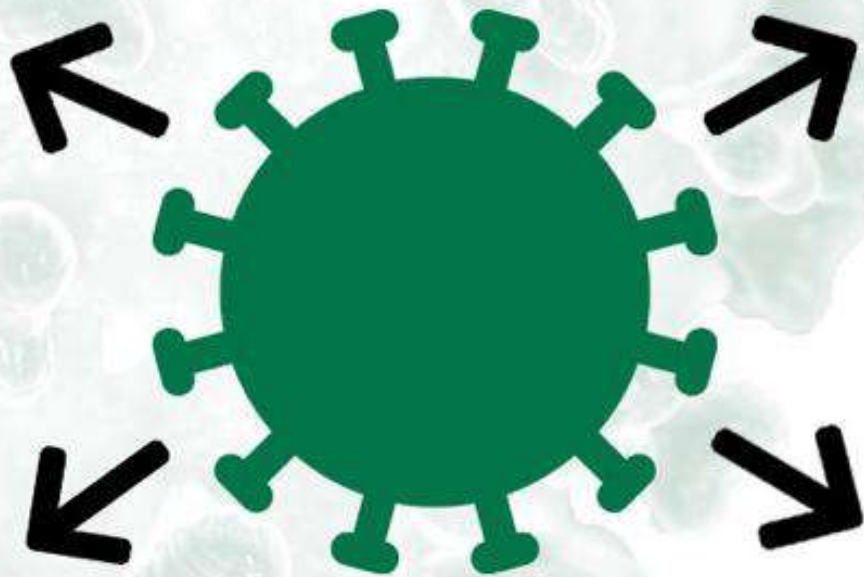


CORONAVIRUS UPDATE

What is the purpose of a lockdown?

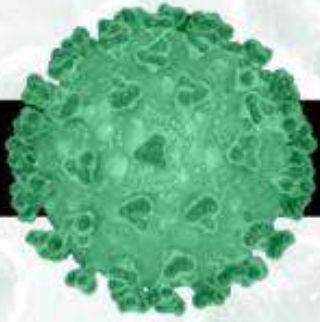


The nation-wide lockdown is necessary to fundamentally disrupt the chain of transmission.

It will prevent the spread of the virus and save the lives of South Africans.

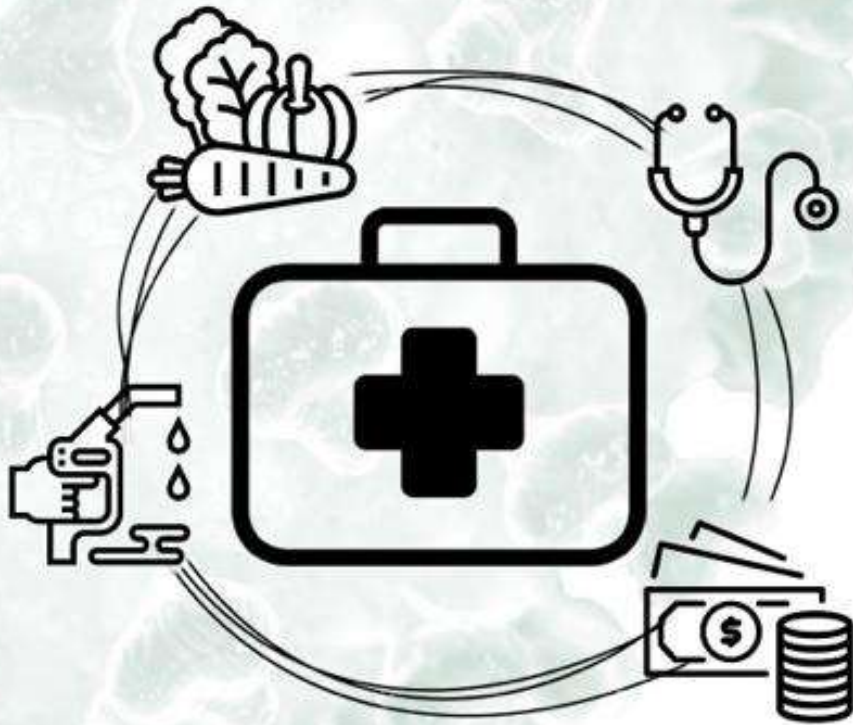
The full national lockdown will begin at **midnight on Thursday 26 March**, and will continue for **21 days**.





CORONAVIRUS UPDATE

What will I be able to do under lockdown?

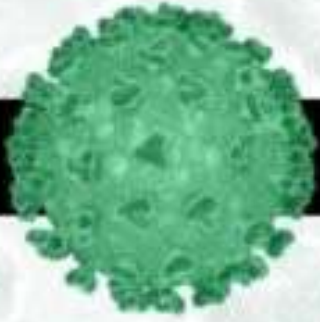


You will be able to:

- Seek medical care
- Buy groceries
- Visit the pharmacy
- Access banking services
- Get petrol
- Collect a social grant

The full national lockdown will begin at **midnight on Thursday 26 March**, and will continue for **21 days**.





CORONAVIRUS UPDATE

What is a lockdown?



A lockdown is an emergency protocol that requires South Africans to stay at home except for essential purposes.

Grocery stores, pharmacies, banks and other essential industries will remain open.

All non-essential activities are suspended.

The full national lockdown will begin at **midnight on Thursday 26 March**, and will continue for **21 days**.

